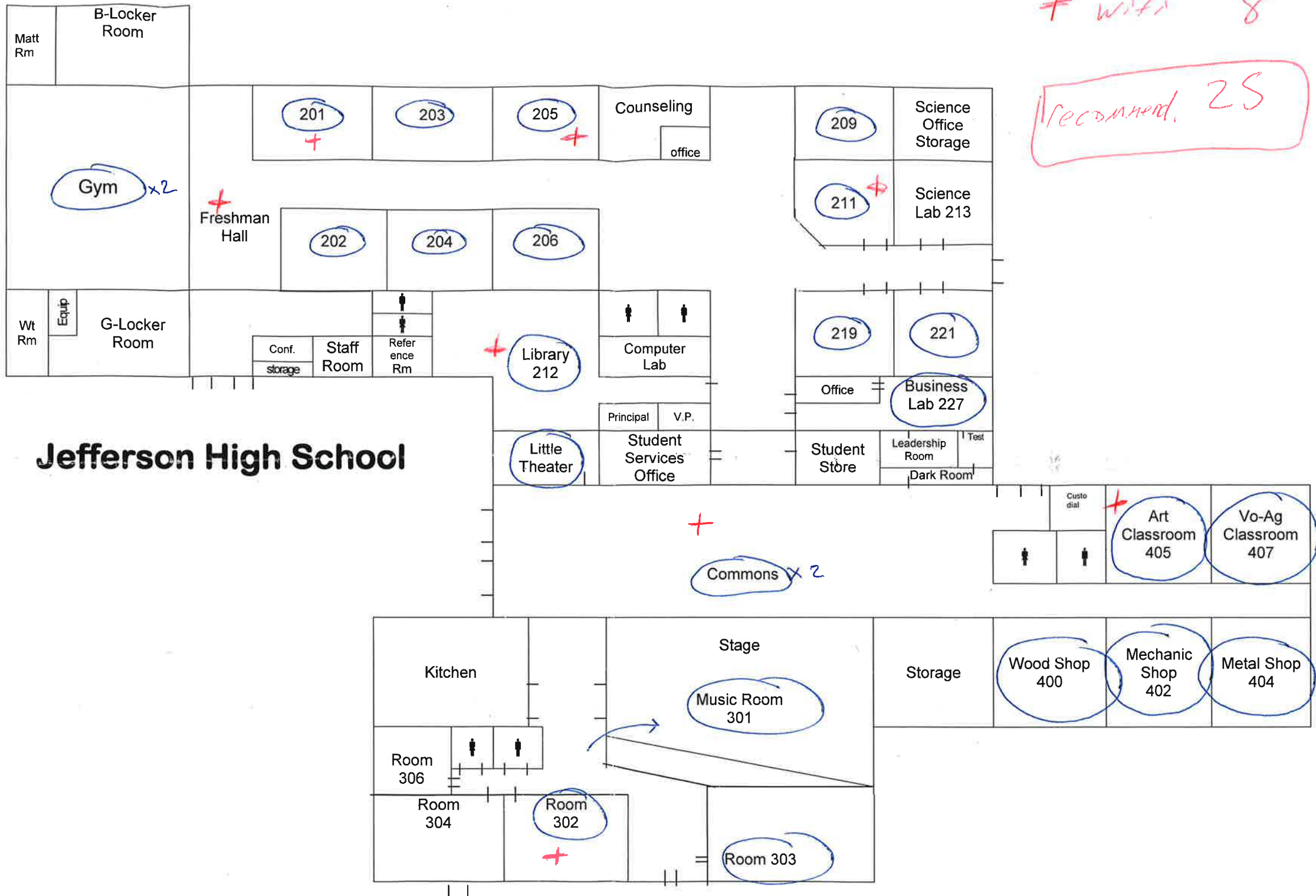


+ wife 8

recommended 25



Jefferson High School

Jefferson Elementary

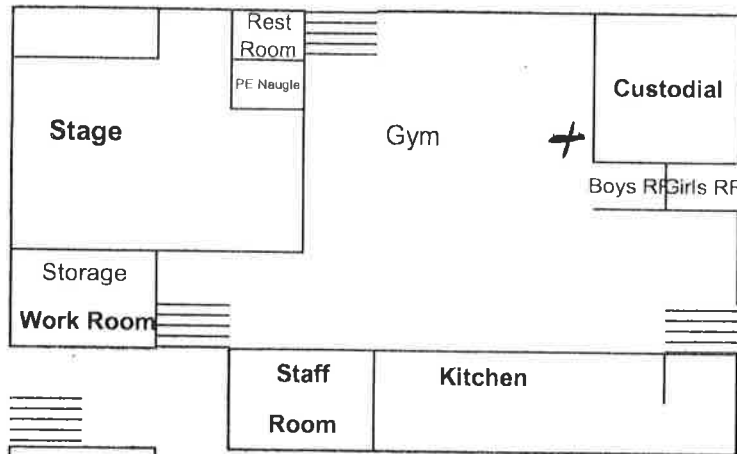
Room 6 Fjeldheim	Room 7 Gould	Room 8 Merriman	Room 9 Head Start
----------------------------	------------------------	---------------------------	-----------------------------

Room 20 Rushing	Room 21 Cook
---------------------------	------------------------

Room 5 Danforth
Room 4 Sannan
Room 3 Bean
Room 2 Engberg
Room 1 Shumate

Room 22 Music - Lake	Girls RR	Boys RR	Room 23 Mellison
	Boys RR	Girls RR	

Room 24 Strahan	Room 25 Compton
---------------------------	---------------------------



Room 19 Mallery
Room 17 Ficker

Room 18 Withee
Room 16 Computer lab
Girls RR
Boys RR
Book Closet
Boys RR

All classes head SOUTH to play field in Emergencies
(Except for Lock Down and Lock Out)

Health Room	Room 14 Rahn	Room 13 Resource	Room 10 Stott	Rest Room
-------------	------------------------	----------------------------	-------------------------	-----------

Library

Specialists	Secretary Kreder	Office Manager Fetter	Room 12 Houpert	Room 11 Houpert
Exercise Room	Sepulveda	Principal Keifer		

Bus Arrival

Special Ed

6

4

9

1

2

3

5

7

8

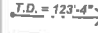









East

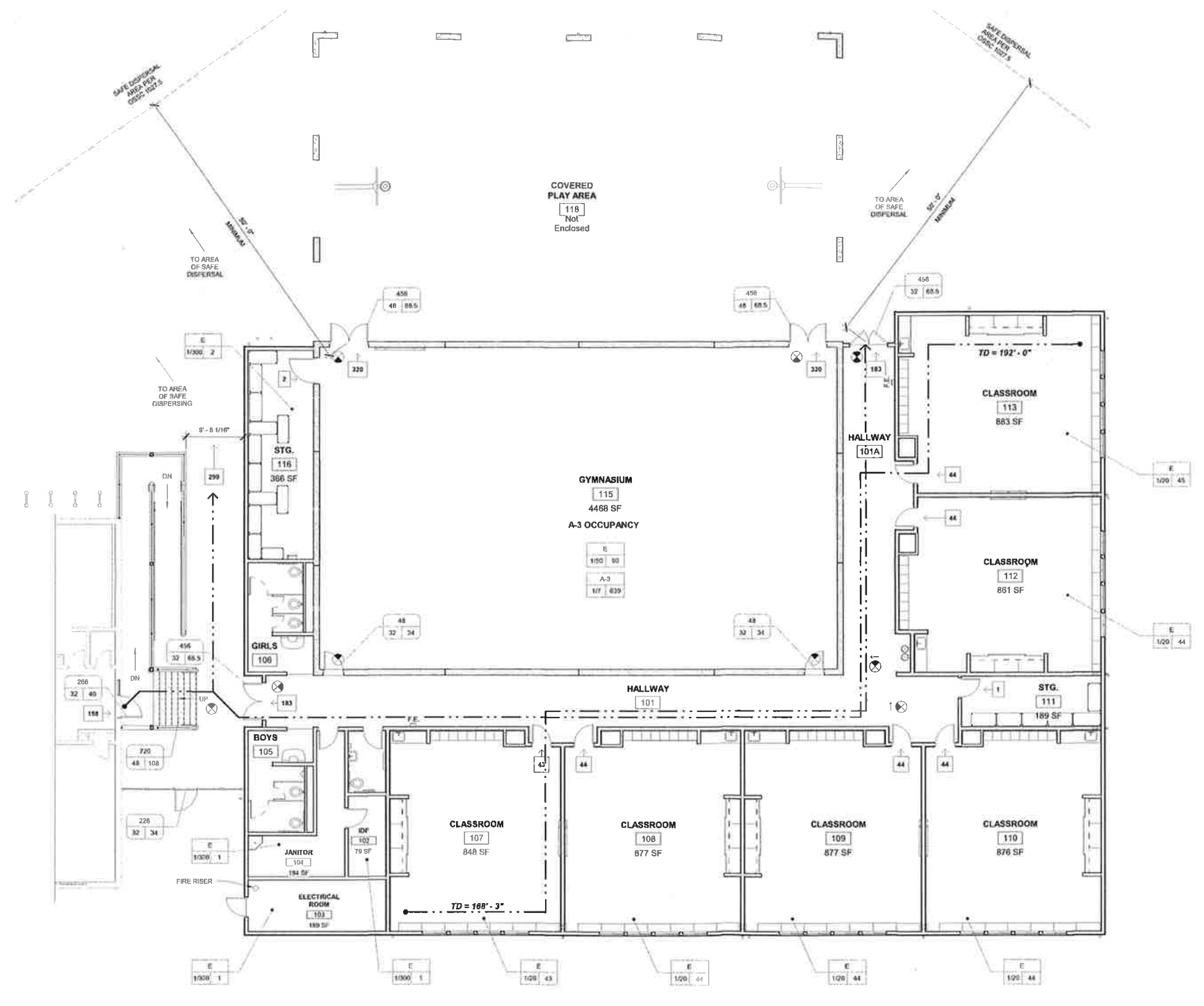
North

South

West

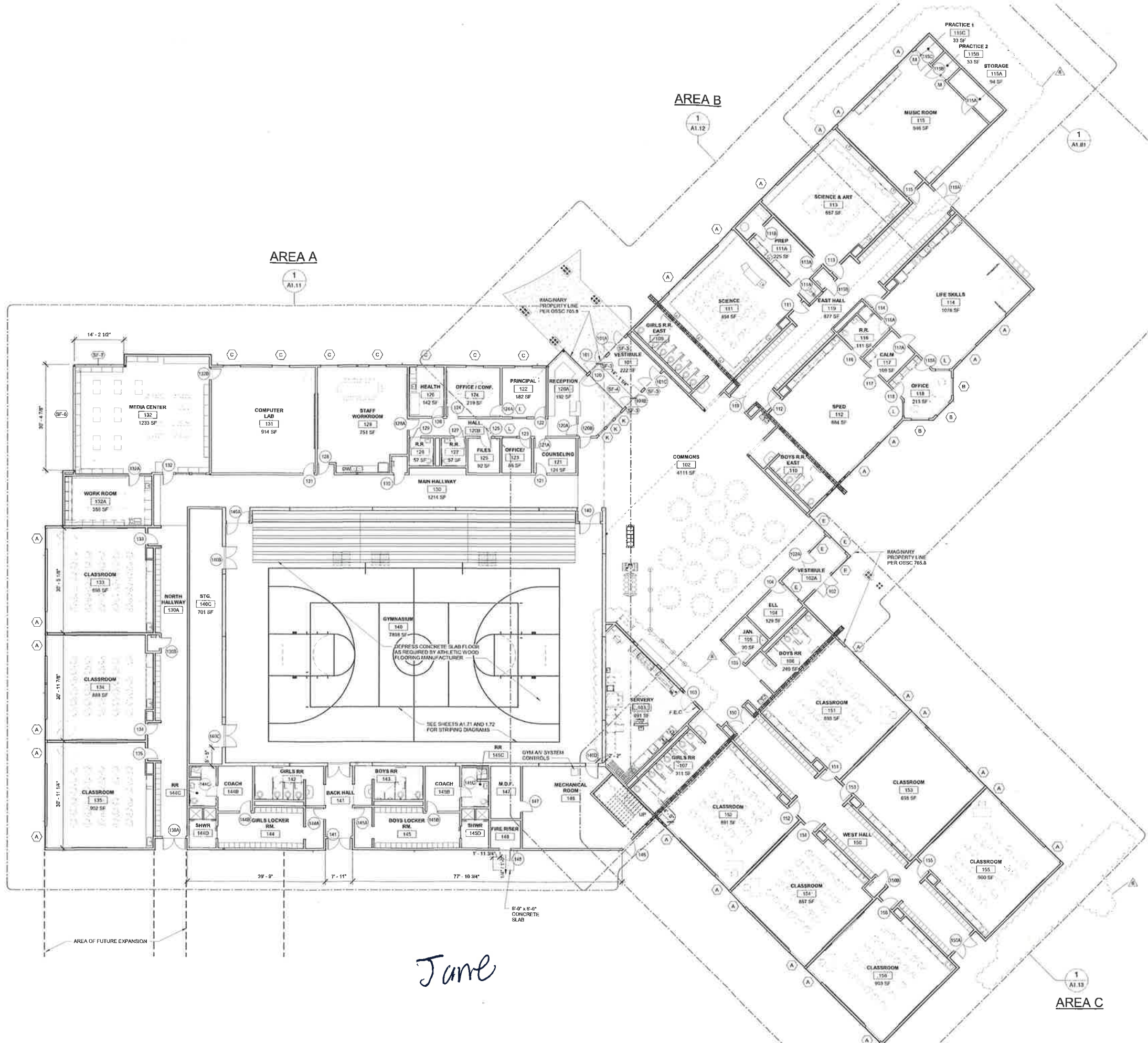
EXITING DIAGRAM LEGEND

-  TRAVEL DISTANCE AND PATH OF TRAVEL
-  OCCUPANT LOAD EXITING SPACE
-  MAX. OCCUPANT LOAD SERVED AT DOOR OR STAIR BY WIDTH PROVIDED
-  DOOR/STAIR WIDTH PROVIDED
-  MIN. DOOR WIDTH REQUIRED
-  OCCUPANCY GROUP
-  OCCUPANT LOAD
-  OCCUPANT LOAD FACTOR - AREA (SF) PER PERSON
-  FIRE EXTINGUISHER/CABINET
-  EXIT LIGHT WITH DIRECTIONAL ARROWS WHERE INDICATED



1 EXITING DIAGRAM
1/8" = 1'-0"





- GENERAL NOTES**
- A REFER TO GENERAL NOTES ON SHEET G0 20
 - B SEE WALL TYPES ON SHEET A5 00 FOR TYPICAL WALL CONSTRUCTION ASSEMBLIES. ALL INTERIOR WALLS ARE FULL HEIGHT UNLESS OTHERWISE NOTED
 - C SEE FLOOR PLANS AND BUILDING SECTIONS FOR LOCATION OF DETAILS FOR TYPICAL FLOOR-TO-FOUNDATION, FLOOR-TO-WALL, WALL-TO-ROOF ASSEMBLIES AND HEADERS, SILL AND GFFIT CONSTRUCTION
 - D REFER TO STRUCTURAL, MECHANICAL, PLUMBING, AND ELECTRICAL DRAWINGS
 - E REFER TO SPECIFICATIONS
 - F FURNITURE IS SHOWN FOR REFERENCE ONLY. FURNITURE IS NOT IN CONTRACT
 - G SEE MATRIX ON SHEET G0 20 FOR DESCRIPTION OF OWNER FURNISHED/OWNER INSTALLED AND OWNER FURNISHED/CONTRACTOR INSTALLED ITEMS
 - H ALL INTERIOR NON-BEARING STUD WALLS ARE FULL HEIGHT TO BOTTOM OF ROOF DECK UNLESS OTHERWISE NOTED
 - I INSTALL SILL GASKET UNDER BOTTOM PLATE AT ALL EXTERIOR STUD WALLS
 - J CONTRACTOR SHALL PROVIDE CONTINUOUS HORIZONTAL BLOCKING OR BOND BEAM AS REQUIRED AT ALL WALL JOINTS. PROVIDE AVAILABILITY OF DRAWINGS FOR CASEWORK, PARTITIONS, ETC. REFER TO ARCHITECTURAL INTERIOR ELEVATIONS AND MECHANICAL DRAWINGS, AND SPECIFICATION SECTION 08 1000
 - K OWNER AND ARCHITECT WILL INSPECT ALL LOCATIONS INDICATED OR REQUIRED TO HAVE BLOCKING/BACKING INSTALLED PRIOR TO COVERING FRAMING. NOTIFY OWNER AND ARCHITECT NOT LESS THAN 48 HOURS PRIOR TO COVERING FRAMING
 - L CONTRACTOR SHALL SEAL AROUND ALL PENETRATIONS AT FIRE RATED WALLS, INCLUDING BUT NOT LIMITED TO PIPING, DUCTS, CONDUIT, ETC. WITH FIRESTOPPING PER CODE REQUIREMENTS
 - M PROVIDE PERFORATED FLOORING DRAINS AT ENTIRE PERIMETER OF FOUNDATION AND DRAIN TO OUTFALL PER CIVIL DRAWINGS AND WHERE REQUIRED TO COLLECT ROOF DRAINAGE
 - N REFER TO SHEET A2 20 FOR TYPICAL MOUNTING HEIGHTS OF WALL-MOUNTED ACCESSORIES AND EQUIPMENT
 - O REFER TO FLOOR FINISH PLANS FOR LOCATION OF DETAILS FOR TRANSITIONS AND THRESHOLDS
 - P ELECTRICAL PANELS, TRANSFORMERS, BOILERS, AIR HANDLING UNITS, AND DUCTWORK SHOWN FOR CONTRACTOR CONVENIENCE. SEE ELECTRICAL AND MECHANICAL DRAWINGS FOR SPECIFIC SIZES AND LOCATIONS
 - Q REFER TO REFLECTED CEILING PLAN FOR CEILING MOUNTED EQUIPMENT
 - R GENERAL CONTRACTOR SHALL PROVIDE CONCRETE HOUSEKEEPING PADS AT FLOOR MOUNTED MECHANICAL AND ELECTRICAL EQUIPMENT. THE PADS SHALL BE A MINIMUM 3/4" THICK CONCRETE WITH 6 x 6 W/2 8 x 2 8 W/W REINFORCING UNLESS OTHERWISE NOTED OR REQUIRED. PAD DIMENSIONS SHALL BE A MINIMUM 4" GREATER IN HORIZONTAL DIMENSION THAN BASE OF EQUIPMENT MOUNTED THEREON UNLESS OTHERWISE NOTED. EXACT PAD LOCATIONS SHALL BE VERIFIED IN FIELD
 - S CONTRACTOR TO VERIFY ALL ADA CLEARANCES
 - T ALL DOORS NOT INDICATED BY DIMENSION SHALL BE 4" FROM ADJACENT WALL. SEE DETAIL 20A 12
 - U DEPRESSED SLAB AREAS - SEE FLOOR FINISH PLAN SHEETS FOR AREAS TO RECEIVE DEPRESSED SLABS TO ACCOMMODATE FLOOR FINISHES. VERIFY DEPTH OF DEPRESSED SLAB WITH FINISH FLOORING MANUFACTURER
 - V FIRE WALL MARKING - ALL FIRE RATED WALLS REQUIRED TO HAVE PROTECTED OPENINGS OR PENETRATIONS SHALL HAVE MARKINGS IN CONFORMANCE WITH 2014 OSGC 703 7
 - W GYPSUM BOARD INSTALLATION - REFER TO SPECIFICATION SECTION 05 21 10, ARTICLE 3.01 C FOR RESTRICTIONS ON INSTALLATION OF GYPSUM BOARD AT EXTERIOR OPENINGS AND PROTECTION OF VAPOR BARRIER MEMBRANES
 - X ALL ACCESSIBLE UNDER-SINK KNEE SPACES SHALL HAVE HINGED DOORS MOUNTED ON RETRACTABLE SLIDES
 - Y EXTEND ALL FINISHES INTO KNEE BRACE
 - Z STAR DESIGN BY CONTRACTOR

LEGEND

	W-1 WALL WITH TAG - SEE WALL ASSEMBLY TYPES ON SHEET A5 00
	1 HOUR WALL
	2 HOUR WALL
	LOCKERS
	WALK OFF MATS
	STOREFRONT TAG - SEE A7 13 FOR STOREFRONT SCHEDULE
	WINDOW TAG
	DOOR TAG

1 OVERALL FLOOR PLAN
3/24" = 1/8"

June